

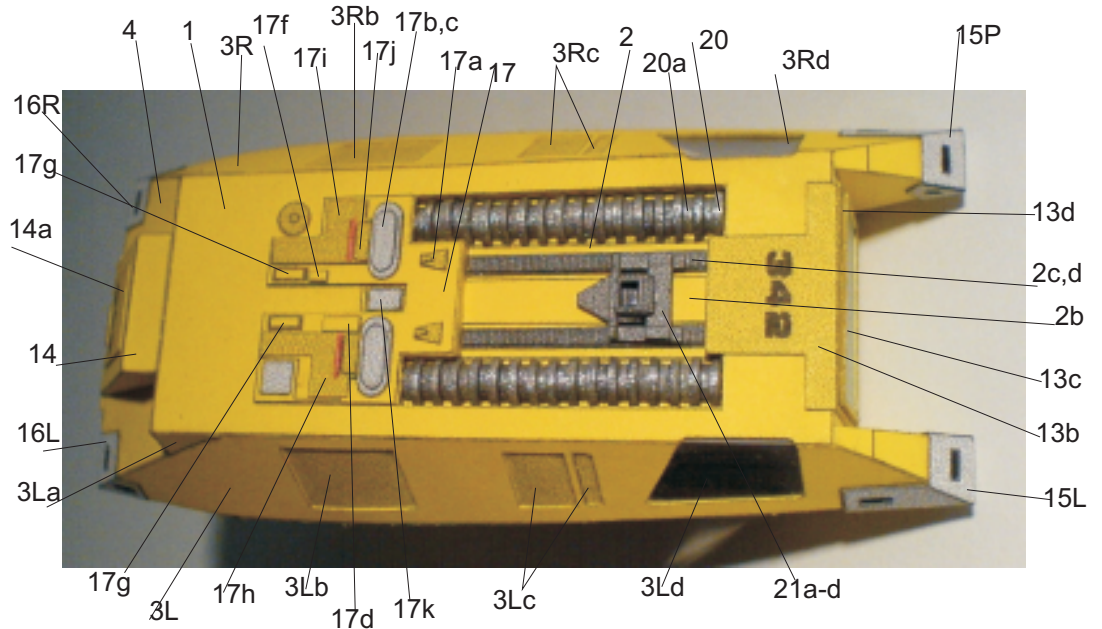


Star Trek Work Bee

Paper model by bonq

[Based on TaffGoach's 3d model](#)

1/33 scale



R - right side

L - left side

✂ - cut out

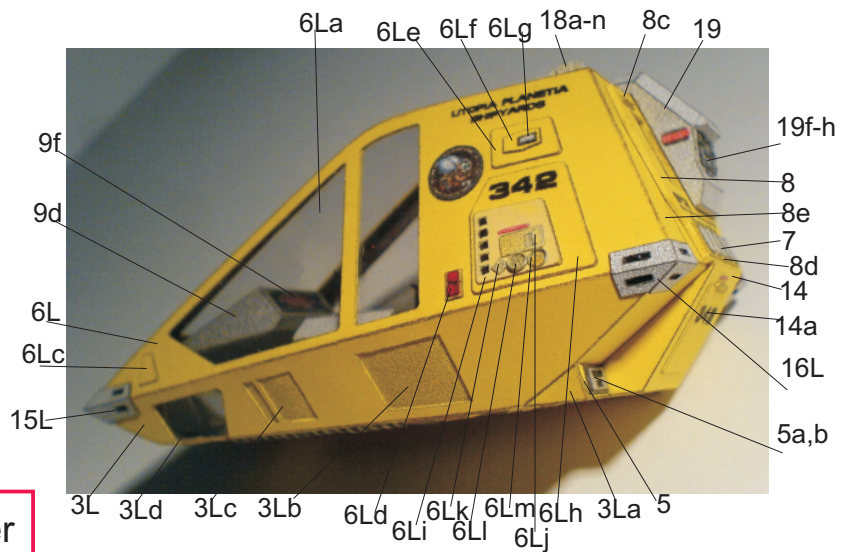
1, 2... - parts number

1,2... - glue parts place

* - glue to bristol (~180g/m2)

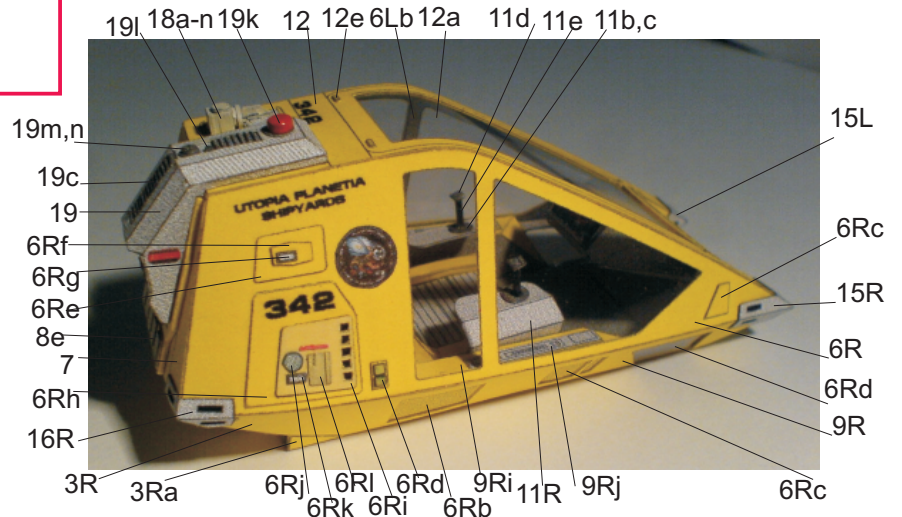
** - glue to bristol twice

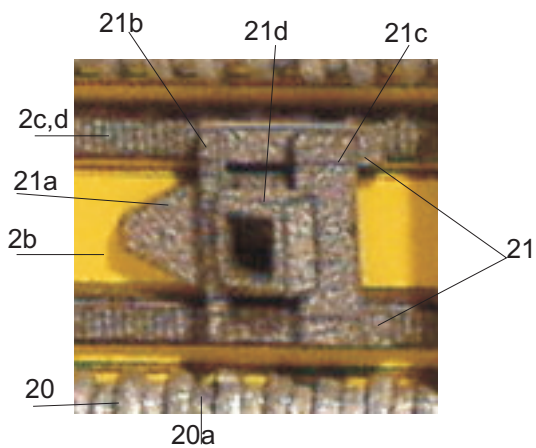
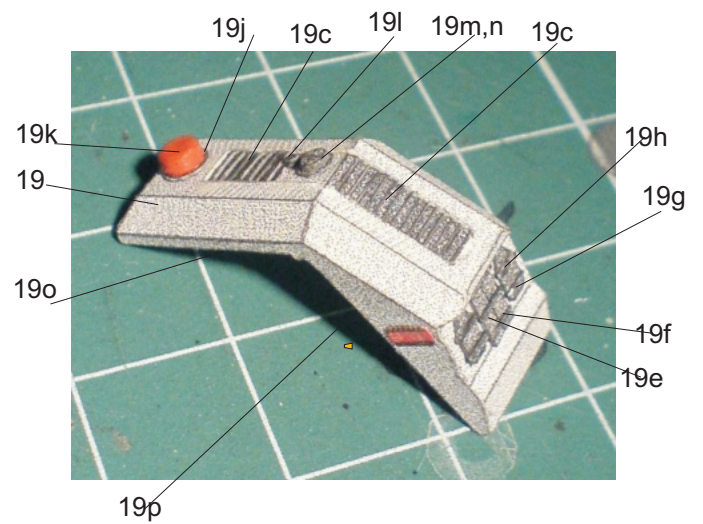
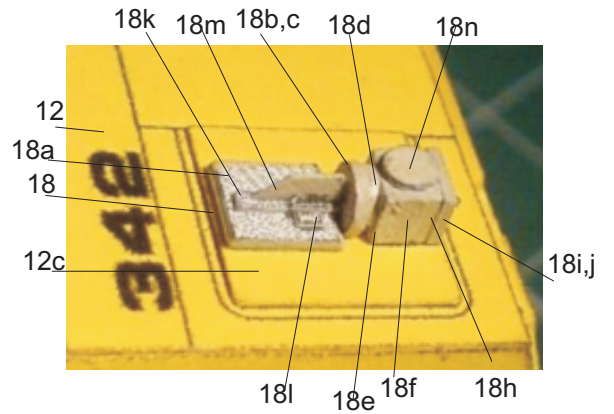
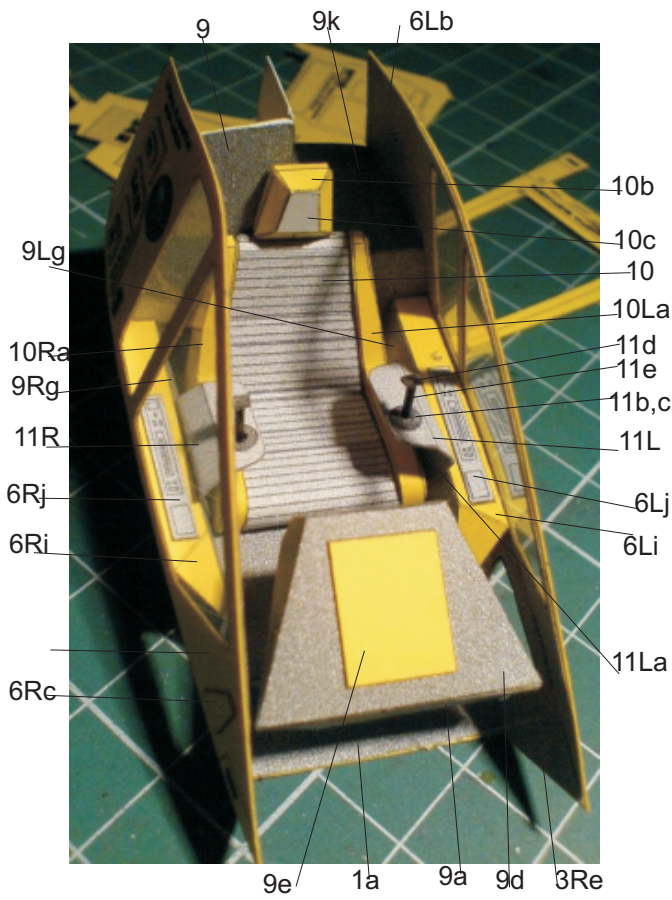
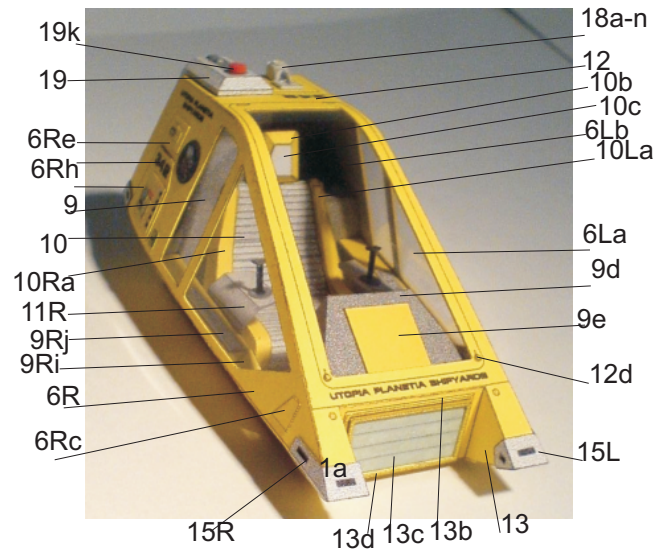
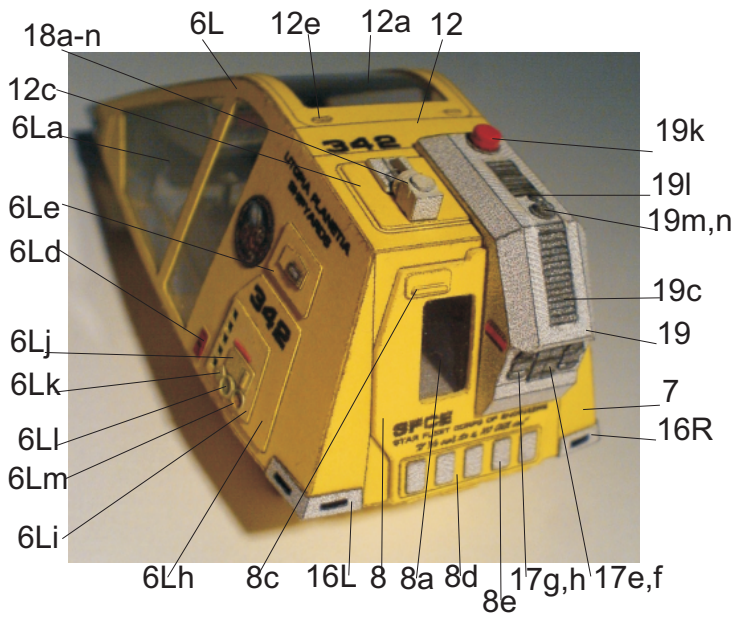
* 0,5mm - glue to 0,5mm cardboard



Sheet 3 print on ~180/m2 bristol paper

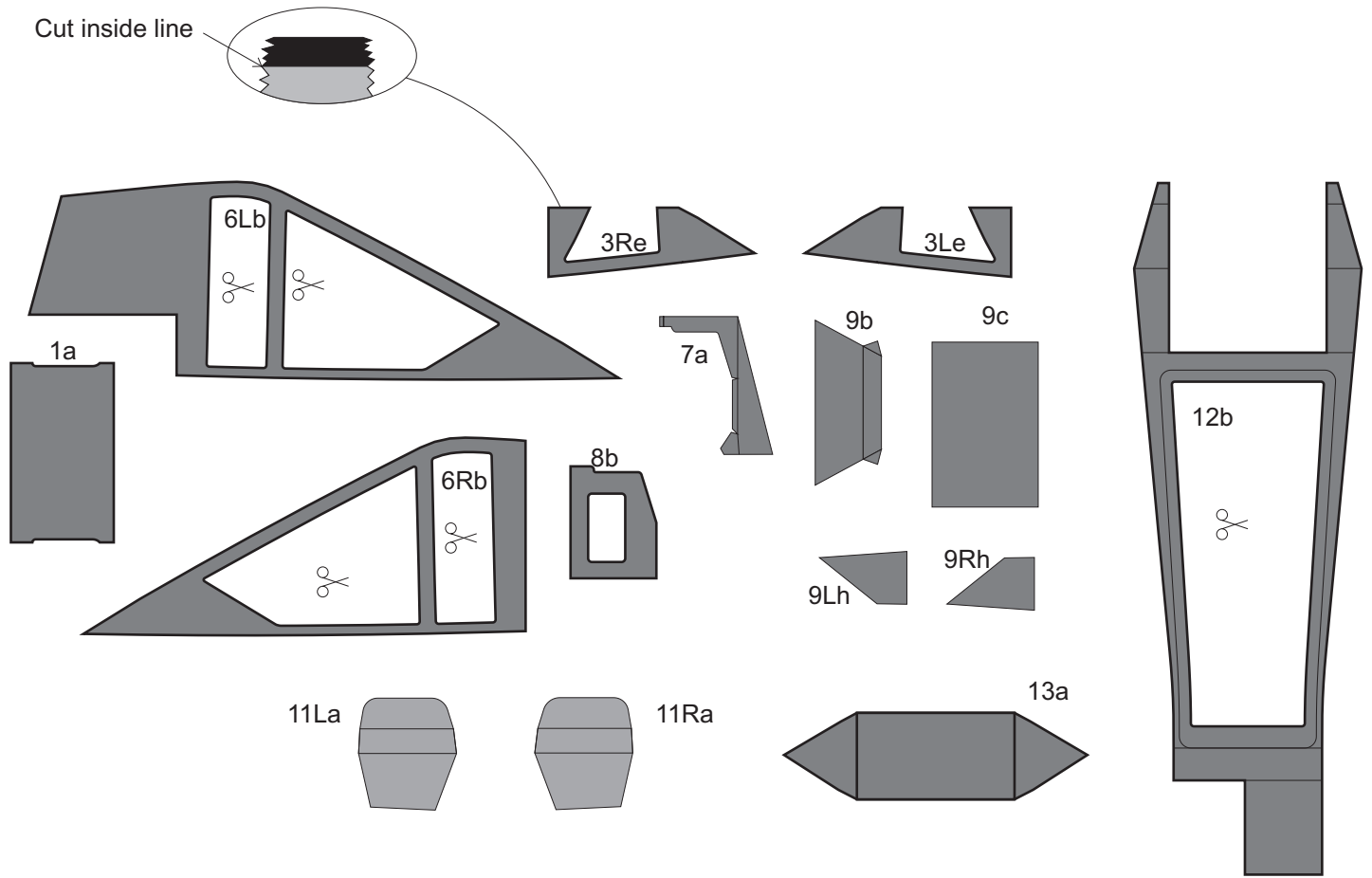
Sheet 4 print on ~80/m2 paper





Print on ~80/m2 paper

Cut inside line



Transparent

