

⑥ The PDV Service Station



Paper Model
to print, cut and assemble

We, at the People's Ministry of Petroleum and Mining and PDVSA, have undertaken the task of educating Venezuelans, aware of the reasonable and sovereign use of oil, convinced of its strategic value to fight poverty and join peoples.

We are positive that getting on the activities carried out by PDVSA to turn oil and gas into gasoline, computer items, toys and a wide array of useful goods will make us more careful and watchful of whatever is said and done in our oil industry.

For such purposes, we are handing in you the Series "Learning about oil," composed of simple, ready-to-assemble models of oil operations.

This time, we are providing you with The PDV Service Station. We are certain that as soon as you finish off, you will have discovered, along with us, one of the so many wonderful worlds of the oil industry.

How to use this material.

- Print the cover, the text information and the instructions to assemble the model, on bond paper.
- On a printer that accepts cardboard, print the parts of the model and its base. Use letter-size bristol cardboard.



WHAT IS A SERVICE STATION?

A service or gas station is a facility, which sells fuel and lubricants for vehicles, generally oil byproducts, gasoline, or gasoil. Some service stations also supply special fuels, such as liquefied petroleum gas (LPG). The dispensing may be made by customers (self-service) or by an attendant

TYPES OF FUEL

Fuels are classified according to the number of octanes: the higher the octane index, the lower the knocking power. There are two grades of fuel available in Venezuela: 91-octane and 95-octane fuel.

VEHICLE NATURAL GAS

The Auto gas Project sponsored by PDVSA seeks to replace the use of gasoline with an alternative, more economical and less pollutant fuel. The purpose is raising awareness of the significance of energy and of its sensible, efficient use.

CONSTITUENT ELEMENTS OF A SERVICE STATION

1 - Gasoline storage tank.

Following unloading from tank trucks, the gasoline is stored in underground deposits, called tanks. Each tank can contain thousand liters of gasoline. There are at least two tanks per service station, depending on the grade (91 octanes, 95 octanes or gasoil). The LPG is stored in another, separate place.

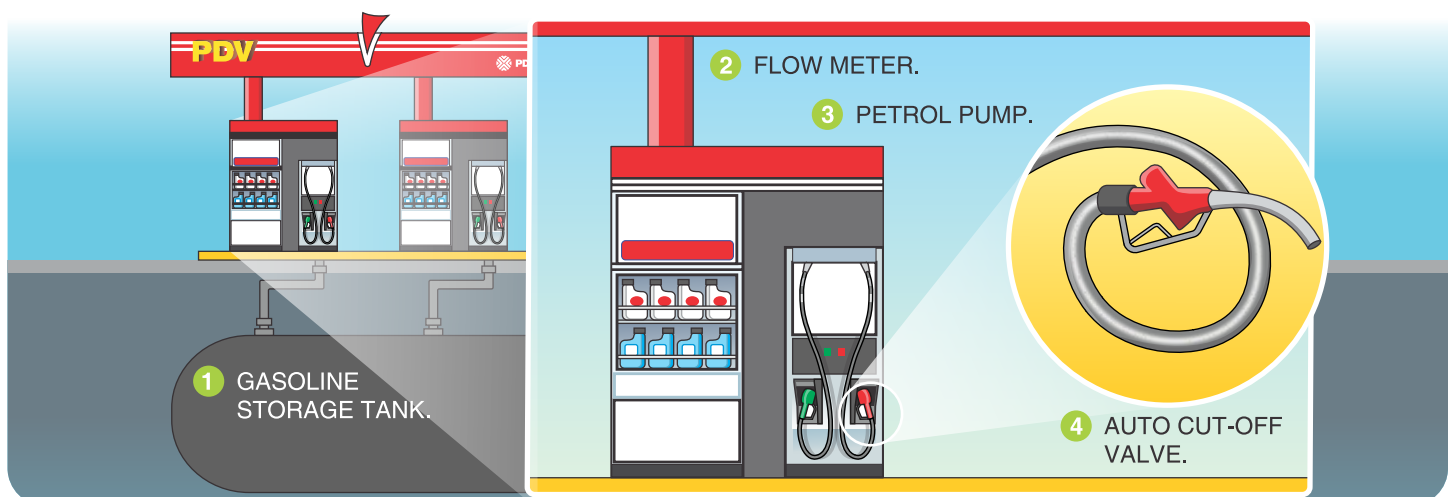
2 – Flow meter

It measures the amount of gasoline pumped to a vehicle by means of a computer located in the dispenser; the computer shows the measured amount in liter tenths.

3 – Petrol pump

Also known as gas pump or gasoline dispenser, it is used to put gasoline in vehicles. Petrol pumps have a hose, which ends in an auto cut-off device, which detects when the vehicle tank is full and stops the supply.

Main components of a service station



HOW TO ASSEMBLE THE PDV SERVICE STATION



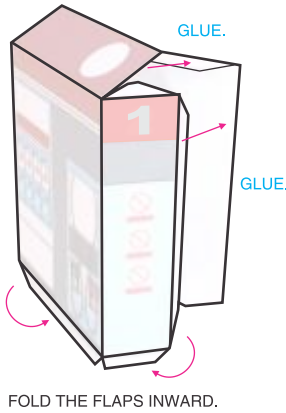
DOTTED LINES
Show the area that needs to be **folded**.



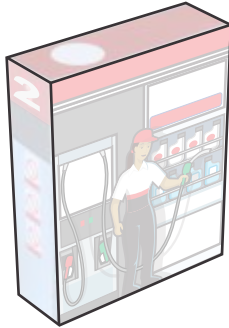
SOLID LINES
Show the area that needs to be **cut out**.

- Before cutting the pieces out, go over all the fold lines with the tip of an exhausted ballpoint pen and a rule. This will help you fold the pieces.
- Cut out every piece; arrange them in your workplace in alphabetical order (each piece has an identity letter).
- Fold each piece.
- Carefully read the directions before starting.
- Take your time to assemble each piece, following the steps.
- Once the model is over, glue it on its base; the base is overleaf.
- You can glue the base on a piece of cardboard, polyethylene, or MDF, of 23 x 30 cm to make it steadier.

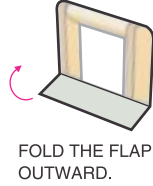
1 "A" Piece . PETROL PUMPS.



2 ASSEMBLE THE OTHER PETROL PUMP IN THE SAME WAY.

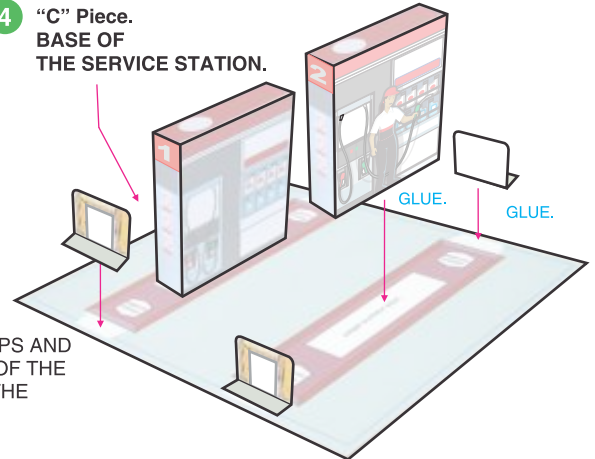


3 "B" Piece. GUARDS.

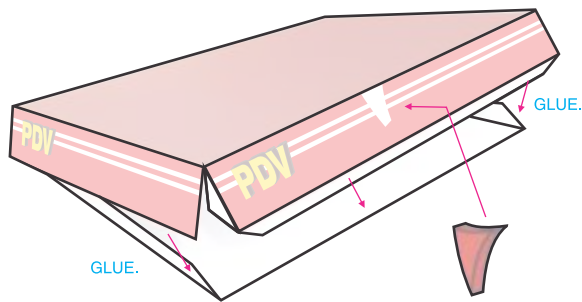


5 GLUE THE PETROL PUMPS AND GUARDS ON THE BASE OF THE SERVICE STATION, ON THE MARKED SPOTS.

4 "C" Piece. BASE OF THE SERVICE STATION.



6 "D" Piece. ROOF.

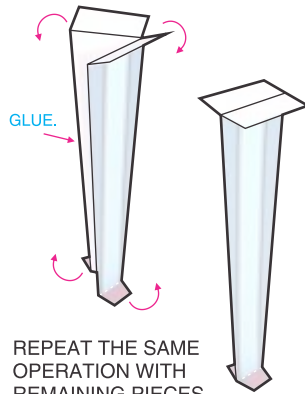


FOLD THE FLAPS AND GLUE THEM TO ASSEMBLE THE ROOF OF THE SERVICE STATION.

GLUE THE PDV LOGOS ON THE MARKED SPOTS; ONE ON EACH SIDE.

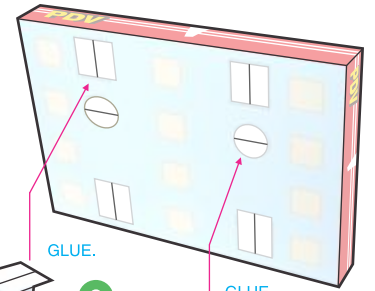
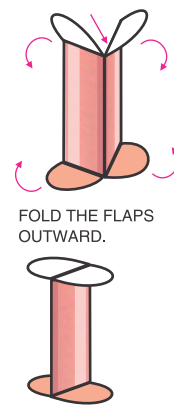
7 "E" Pieces. COLUMNS.

FOLD THE FLAP OUTWARD.



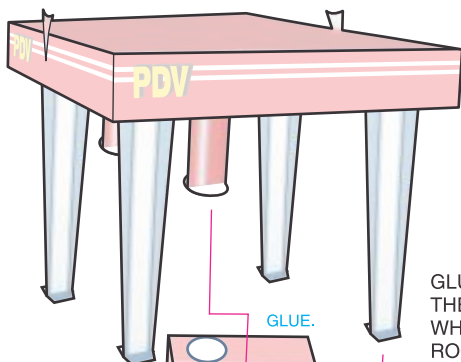
8 "F" Pieces.

FOLD AND GLUE.



9 GLUE THE FOUR COLUMNS TO THE ROOF, ON THE MARKED SPOTS.

10 GLUE THE TWO PILLARS ON THE MARKED CIRCLES.



11 GLUE THE FLAPS OF THE COLUMNS, WHICH HOLD THE ROOF ON THE MARKED SPOTS, ON THE BLUE BASES.

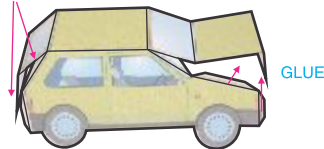
GLUE THE FLAPS OF THE RED PILLARS ON THE PETROL PUMPS, ON THE MARKED SPOTS.

GLUE.

GLUE.

12 "G" Piece. CAR.

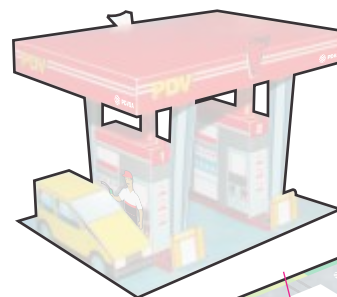
GLUE.



GLUE THE FLAPS AND ASSEMBLE THE CAR.

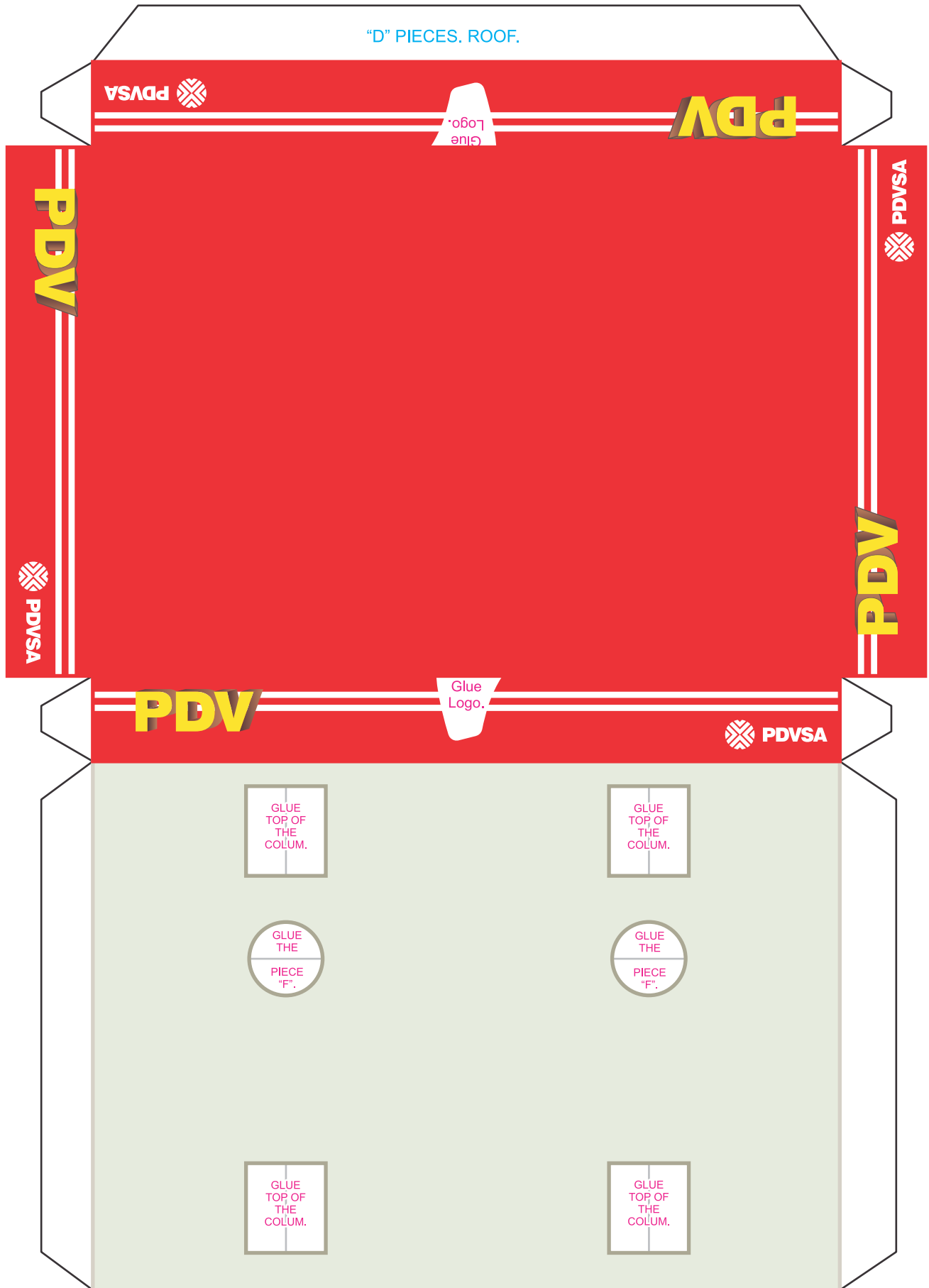


13 GLUE THE MODEL ON ITS BASE; THE BASE IS OVERLEAF.



GLUE.

"D" PIECES. ROOF.



PDVSA

Glue
Logo.

PDV

PDV

PDVSA

PDVSA

PDV

Glue
Logo.

PDV

PDVSA

GLUE
TOP OF
THE
COLUM.

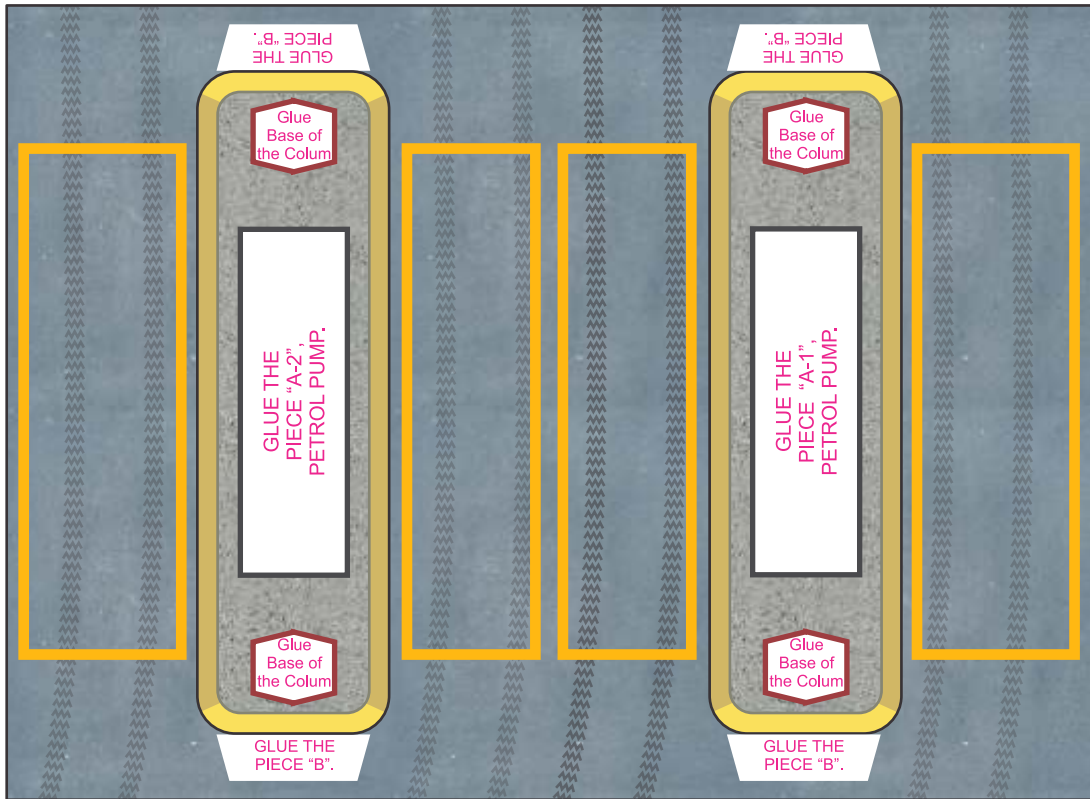
GLUE
TOP OF
THE
COLUM.

GLUE
THE
PIECE
'F'.

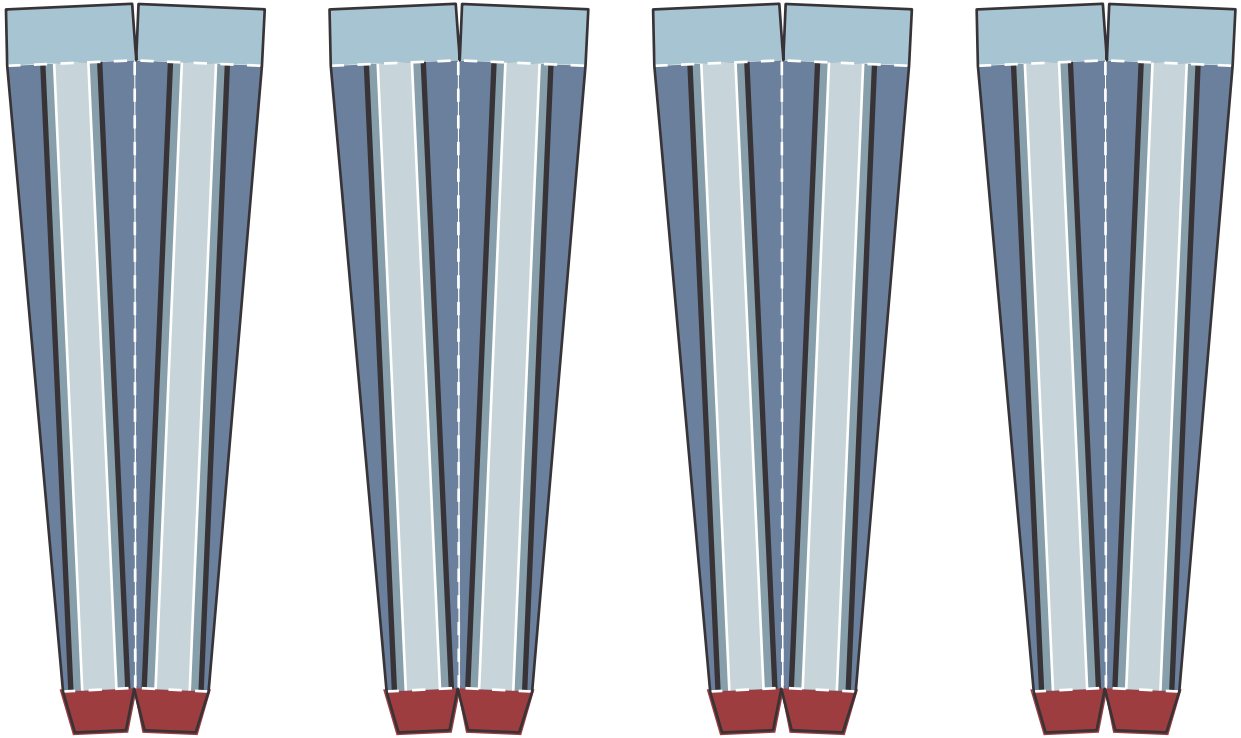
GLUE
THE
PIECE
'F'.

GLUE
TOP OF
THE
COLUM.

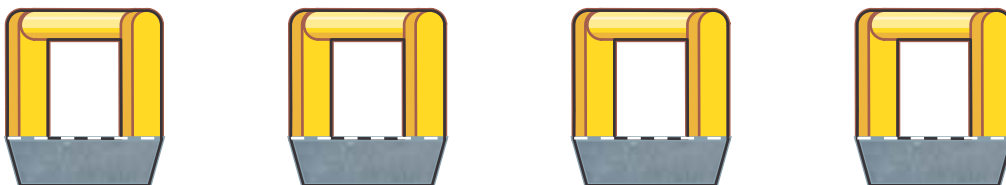
GLUE
TOP OF
THE
COLUM.



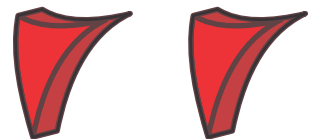
"E" PIECE. COLUMNS.

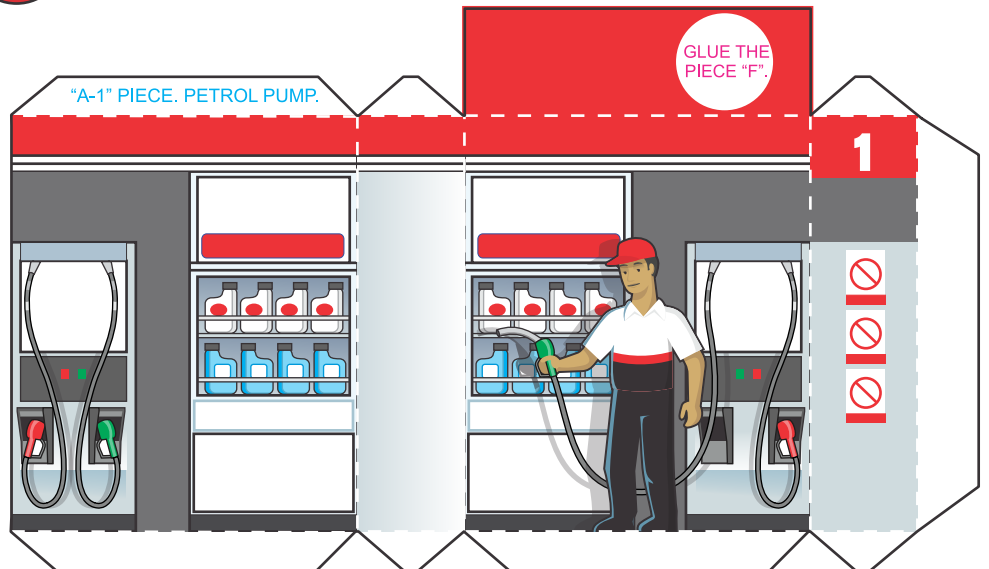
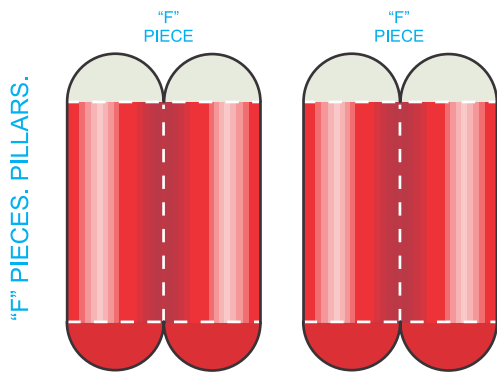
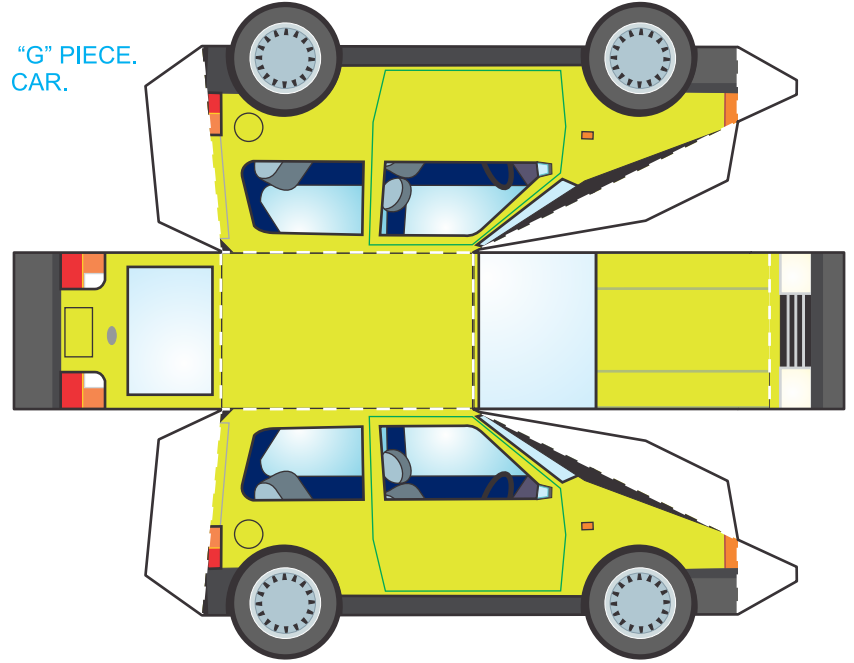
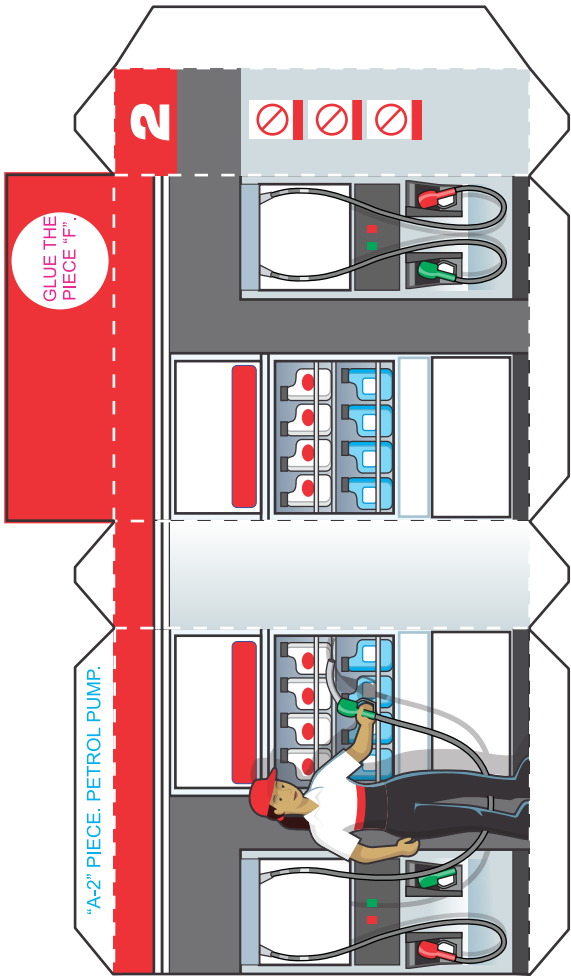


"C" PIECES.
GUARDS.



LOGOS







The PDV Service Station

WHAT IS A SERVICE STATION?

A service or gas station is a facility, which sells fuel and lubricants for vehicles, generally oil byproducts, gasoline, or gasoil. Some service stations also supply special fuels, such as liquefied petroleum gas (LPG).
The dispensing may be made by customers (self-service) or by an attendant

TYPES OF FUEL

Fuels are classified according to the number of octanes: the higher the octane index, the lower the knocking power. There are two grades of fuel available in Venezuela: 91-octane and 95-octane fuel

AREA TO GLUE
THE PDV SERVICE STATION

